

**CARATTERISTICHE • SPECIFICATIONS • CARACTERISTIQUES
ANGABEN • CARACTERISTICAS • ХАРАКТЕРИСТИКИ**

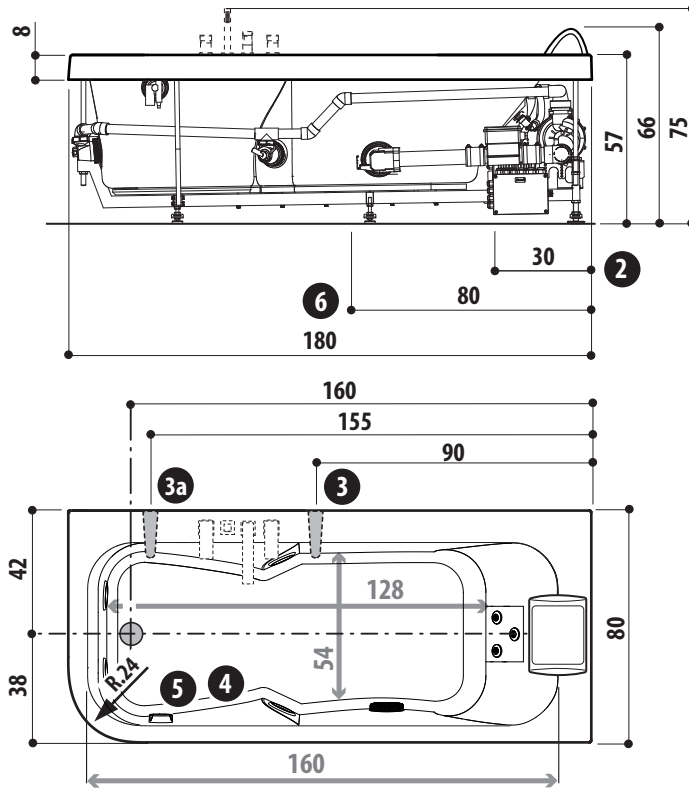


| | | | | | |
|-------------|-------------|---|-----------------------------|-------------|-----------------------------|
| ~ 280 ℓ | ~ 220 ℓ | 220-240 V - 50/60 Hz 6/ 12 (*) A 1,2 / 2,5 (*) kW | 184x88x74 cm ~ 90 kg | ~ 65 kg | ~ 320 kg/m ² |
|-------------|-------------|---|-----------------------------|-------------|-----------------------------|

**AQUASOUL
LOUNGE
180X80**

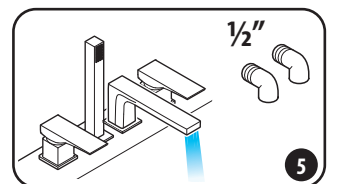
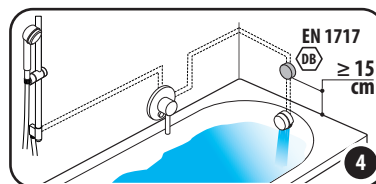
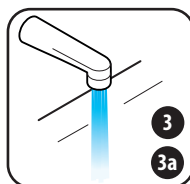
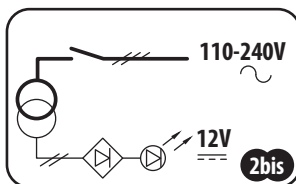
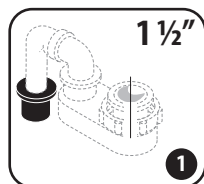
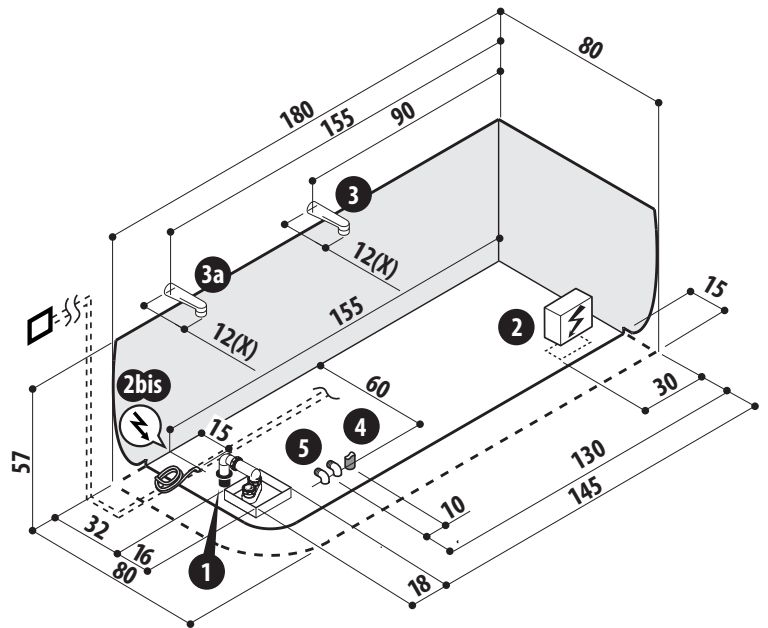
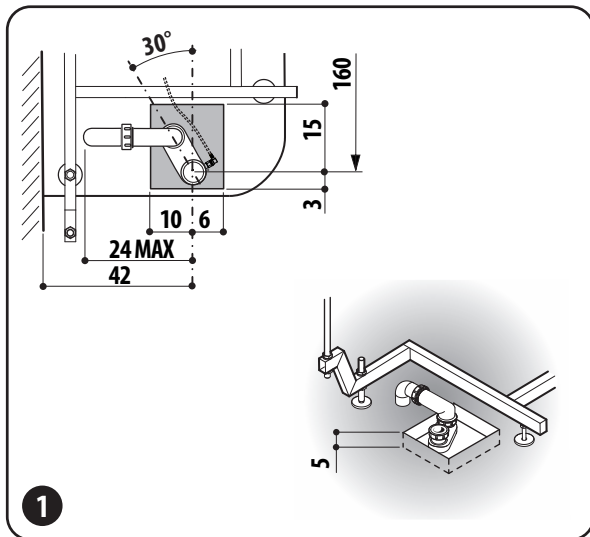
(*) con sistema di mantenimento della temperatura dell'acqua • with water temperature control system • avec système de maintien de la température de l'eau mit system zur Erhaltung der Wassertemperatur • con sistema de mantenimiento de la temperatura del agua • с система поддержания температуры воды

- I disegni riportati non sono in scala
- The show drawings are not scaled
- Les dessins reportés ne sont pas à l'échelle
- Die Zeichnungen sind nicht im Maßstab
- Los dibujos representados no son en escala
- Рисунки приведены не в масштабе



DX

cm



ALLEGARE IL TESTO DI PREINSTALLAZIONE - ADD TO THIS SHEET THE PREINSTALLATION INSTRUCTIONS - FICHE À ASSOCIER AU TEXT DE PRE-INSTALLATION - DIESES DATENBLATT MUSS VOM VORINSTALLATIONS TEXT - FICHA A UNIRSE AL TEXTO DE PREINSTALACIÓN ПРИЛОЖИТЬ К ПРЕВАРИТЕЛЬНОЙ ТЕКСТАМ